

product data sheet

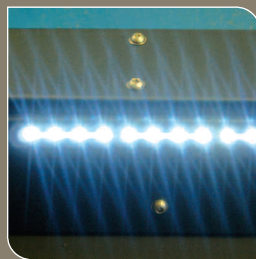
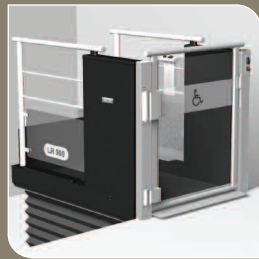
# Low Rise Lifting Platform

Wessex Low Rise Lifting Platforms are the perfect solution to give easy access to homes, buildings and public premises where a change in level excludes the less able.

The Lifting Platform can be easily converted to a Steplift by adding an innovative bridging device which allows access for wheelchair users up to 4 steps (1 metre). The Lifting Platform is not only a cost effective quality solution, it is also supremely flexible.



## open lifting platform



GIVING PEOPLE THE LIFT THEY NEED



A MEMBER OF THE RATCLIFF GROUP

# Low Rise Lifting Platform



## TECHNICAL SPECIFICATION

	LR800	LR900
<b>Platform Size</b>	1450 x 800mm	1450 x 900mm
<b>Footprint</b>	1890 x 1004mm	1890 x 1104mm
<b>Safe Working Load</b>	300kg	
<b>Location</b>	Internal and external	
<b>Access</b>	through access	
<b>Fixing</b>	Free standing	
<b>Travel Speed</b>	20mm/sec	
<b>Travelling Height</b>	1000mm	
<b>Gate</b>	Single Interlocked Self-Closing Top Gate (available as an option)	
<b>Ramp</b>	Power Driven Travelling Ramp/wheelstop	

The Wessex policy is one of continuous product development and the Company therefore reserves the right to alter product or component specifications without notice.

5 Year anti-corrosion warranty\*

Platform sizes conforming to BS 6440 for both Domestic and Public Access

Durable, tolerant and reliable Steplift with or without Bridging options

A variety of finish and colour options

Internal or External use

Minimum Building Work

Single phase electrics

Simple installation

## A RANGE OF OPTIONS

A range of options are available for step bridging and call stations

## STANDARDS

**BS 6440:1999** current British Standard for Lifting Platforms

## The Machinery Directive 98/37/EC

All platform lifts must be tested in accordance with the European Directive and CE marked

\*Terms & Conditions Apply



## Wessex Lift Co. Ltd.

Budds Lane, Romsey, Hampshire SO51 0HA England  
T: +44 (0)1794 830303 F: +44 (0)1794 512621

E: [info@wessexlifts.co.uk](mailto:info@wessexlifts.co.uk) W: [www.wessexlifts.co.uk](http://www.wessexlifts.co.uk)

A member of the Ratcliff Group.

Registered Office: Bessemer Road, Welwyn Garden City, Hertfordshire, AL7 1ET  
Registered Number: 1269836 VAT Number: 190 0689 57.

